

References

This map was prepared as requested for the office of Representative John Curtis.

A select set of USFS geospatial data (EDW) was used to create this map.

Disclaimer

The USDA Forest Service makes no warranty, expressed or implied regarding the data displayed on this map, and reserves the right to correct, update, modify, or replace this information without notification.

Legend

Wilderness Area Adjustments

- Wilderness Deletions
- Wilderness Additions
- National Wilderness Areas

Basic Ownership

- Non - National Forest System Lands
- National Forest System Lands

Map Date - 9-JULY-2020

Bonneville Shoreline Trail Advancement Act

Mt. Olympus Wilderness

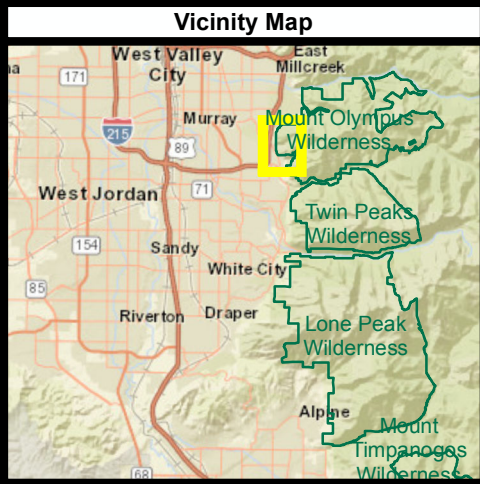
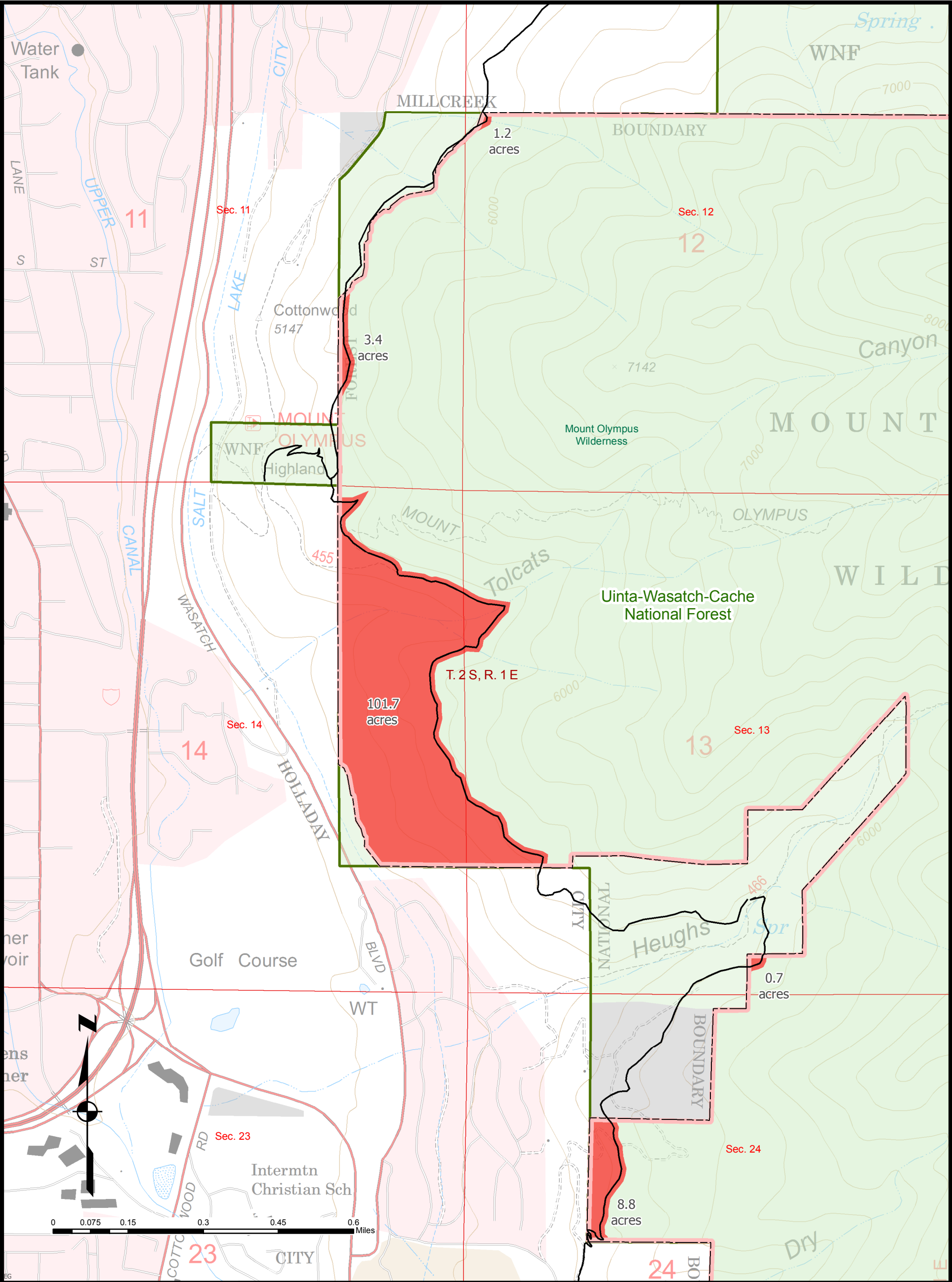
Sheet 1 of 6

Salt Lake Meridian,
Salt Lake County, Utah.

U.S. Forest Service - Intermountain Region
Uinta-Wasatch-Cache National Forest
U.S. Congressional District 3

Map prepared for the office of Representative John Curtis.

Copies of this map are available for public inspection
in the Office of the Regional Forester,
Intermountain Region, Ogden, Utah.



References

This map was prepared as requested for the office of Representative John Curtis.

A select set of USFS geospatial data (EDW) was used to create this map.

Disclaimer

The USDA Forest Service makes no warranty, expressed or implied regarding the data displayed on this map, and reserves the right to correct, update, modify, or replace this information without notification.

Legend

Wilderness Area Adjustments

- Wilderness Deletions
- Wilderness Additions
- National Wilderness Areas

Basic Ownership

- Non - National Forest System Lands
- National Forest System Lands

Map Date - 9-JULY-2020

Bonneville Shoreline Trail Advancement Act

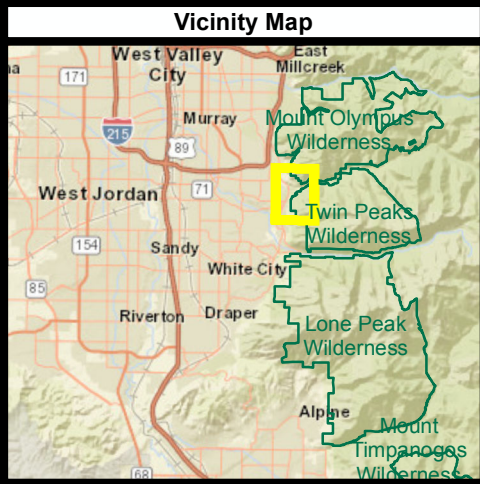
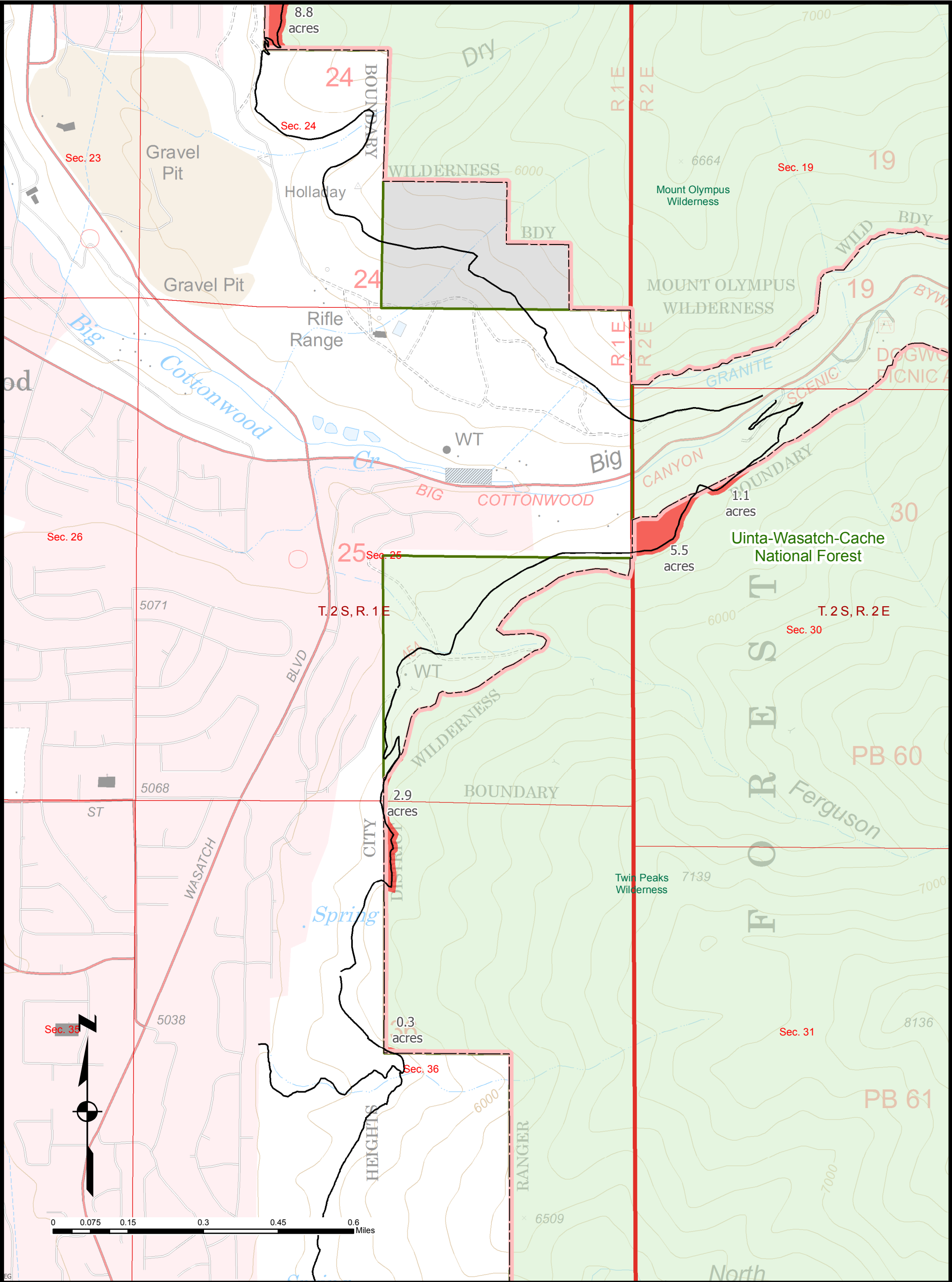
Mt. Olympus Wilderness
Sheet 2 of 6

Salt Lake Meridian,
Salt Lake County, Utah.

U.S. Forest Service - Intermountain Region
Uinta-Wasatch-Cache National Forest
U.S. Congressional District 3

Map prepared for the office of Representative John Curtis.

Copies of this map are available for public inspection
in the Office of the Regional Forester,
Intermountain Region, Ogden, Utah.



References

This map was prepared as requested for the office of Representative John Curtis.

A select set of USFS geospatial data (EDW) was used to create this map.

Disclaimer

The USDA Forest Service makes no warranty, expressed or implied regarding the data displayed on this map, and reserves the right to correct, update, modify, or replace this information without notification.

Legend

Wilderness Area Adjustments

- Wilderness Deletions
- Wilderness Additions
- National Wilderness Areas

Basic Ownership

- Non - National Forest System Lands
- National Forest System Lands

Map Date - 9-JULY-2020

Bonneville Shoreline Trail Advancement Act

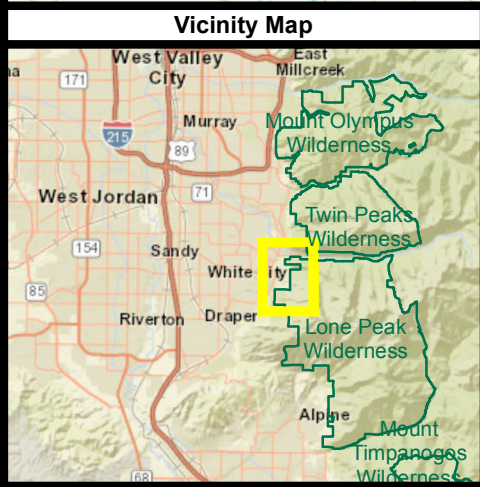
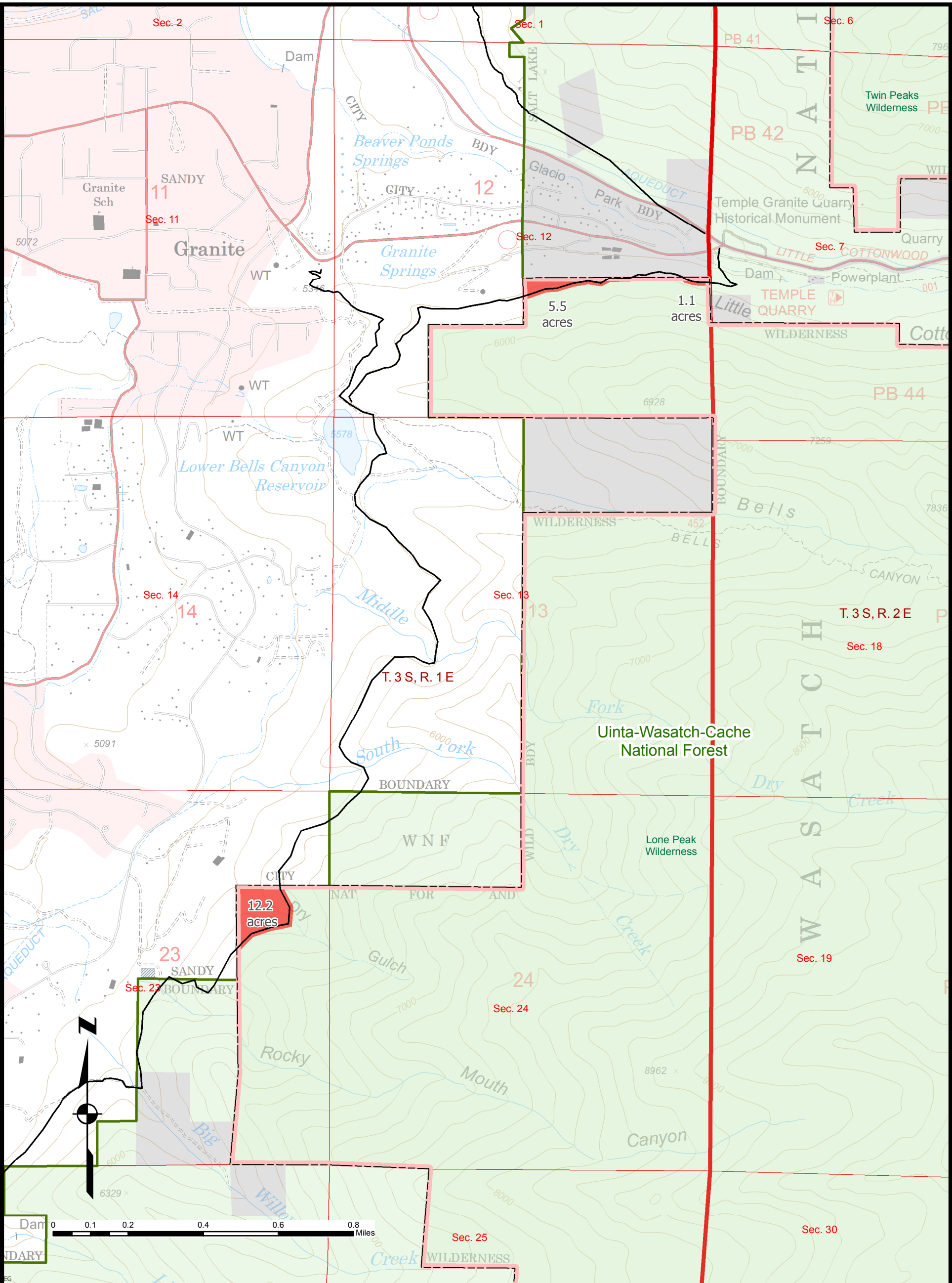
Twin Peaks Wilderness
Sheet 3 of 6

Salt Lake Meridian,
Salt Lake County, Utah.

U.S. Forest Service - Intermountain Region
Uinta-Wasatch-Cache National Forest
U.S. Congressional District 3

Map prepared for the office of Representative John Curtis.

Copies of this map are available for public inspection in the Office of the Regional Forester, Intermountain Region, Ogden, Utah.



References

This map was prepared as requested for the office of Representative John Curtis.

A select set of USFS geospatial data (EDW) was used to create this map.

Disclaimer

The USDA Forest Service makes no warranty, expressed or implied regarding the data displayed on this map, and reserves the right to correct, update, modify, or replace this information without notification.

Legend

Wilderness Area Adjustments

- Wilderness Deletions
- Wilderness Additions
- National Wilderness Areas

Basic Ownership

- Non - National Forest System Lands
- National Forest System Lands

Map Date - 9-JULY-2020

Bonneville Shoreline Trail Advancement Act

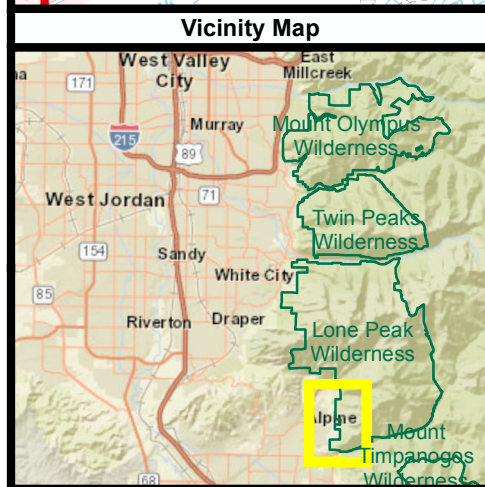
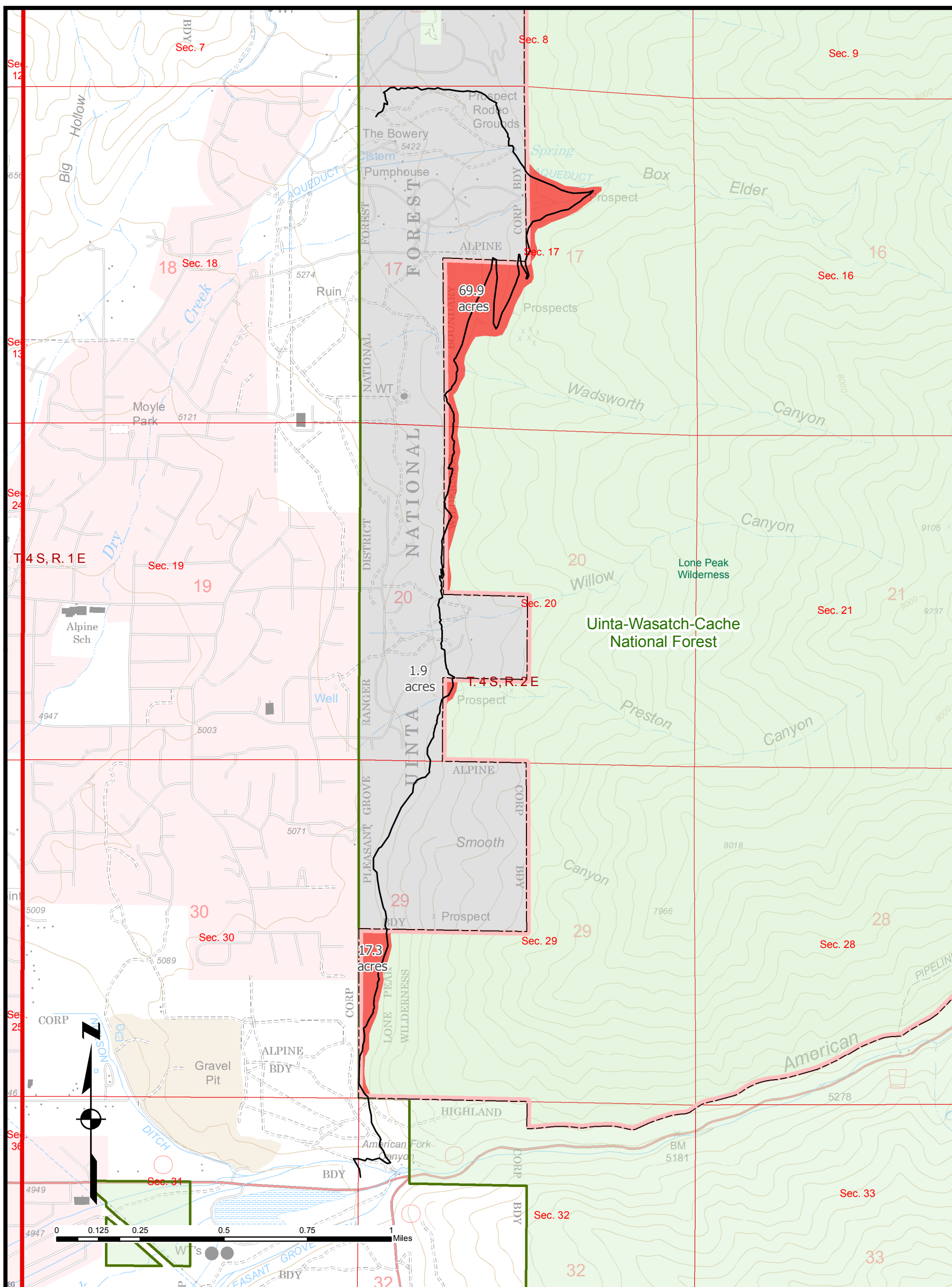
Lone Peak Wilderness
Sheet 4 of 6

Salt Lake Meridian,
Salt Lake County, Utah.

U.S. Forest Service - Intermountain Region
Uinta-Wasatch-Cache National Forest
U.S. Congressional District 3

Map prepared for the office of Representative John Curtis.

Copies of this map are available for public inspection in the Office of the Regional Forester, Intermountain Region, Ogden, Utah.



References

This map was prepared as requested for the office of Representative John Curtis.




A select set of USFS geospatial data (EDW) was used to create this map.

Disclaimer

The USDA Forest Service makes no warranty, expressed or implied regarding the data displayed on this map, and reserves the right to correct, update, modify, or replace this information without notification.

Legend

Wilderness Area Adjustments

-  Wilderness Deletions
 Wilderness Additions
 National Wilderness Areas

Basic Ownership

- Non - National Forest System Lands
- National Forest System Lands

Map Date - 9-JULY-2020

Bonneville Shoreline Trail Advancement Act

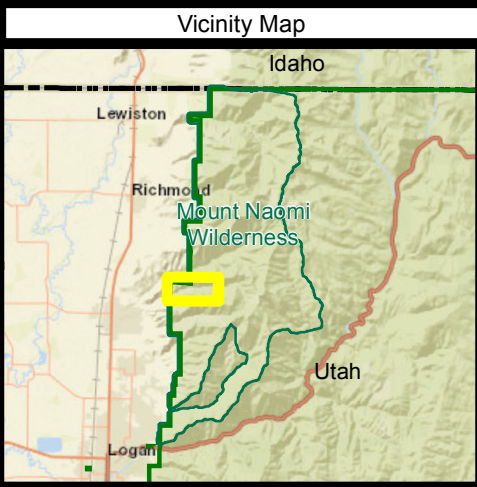
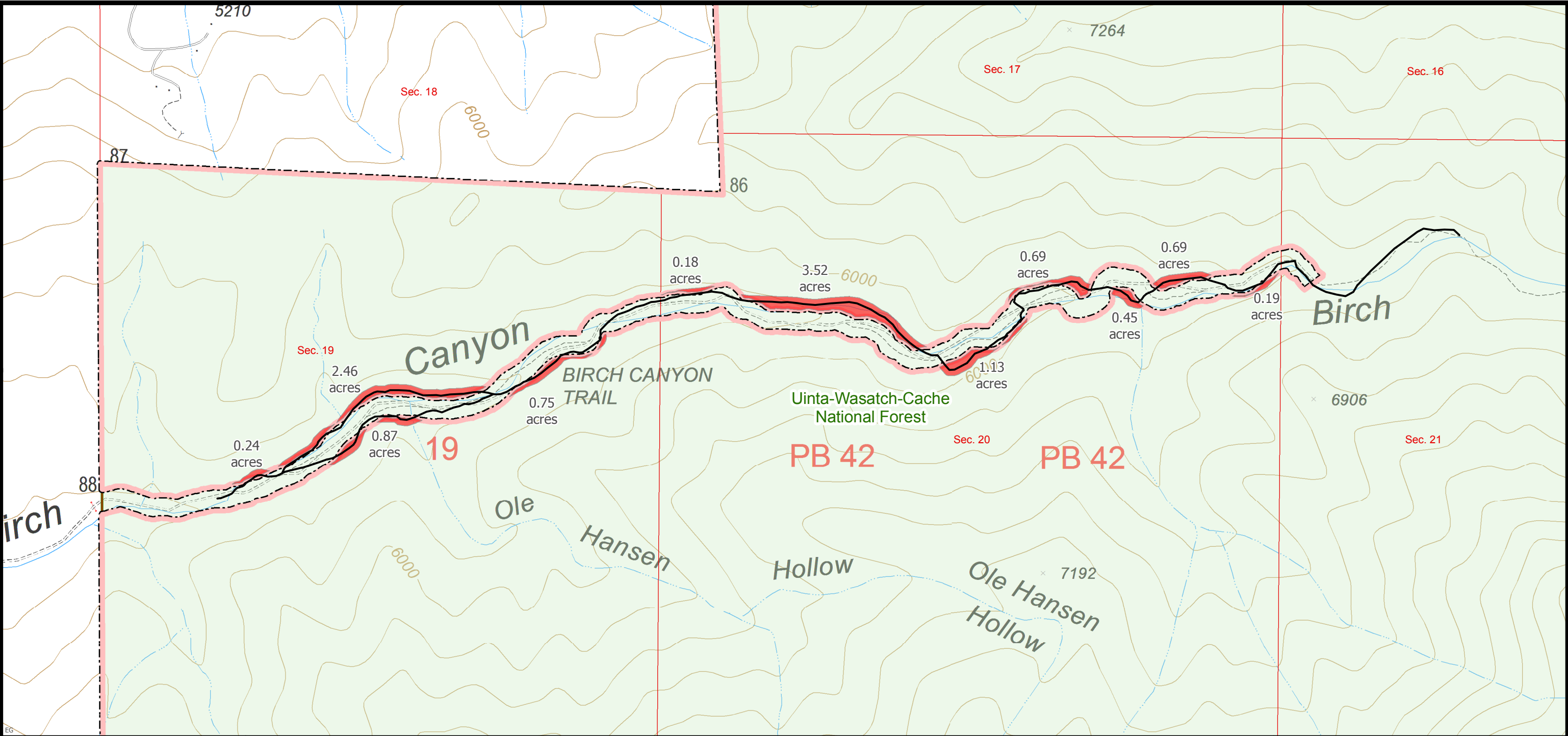
Lone Peak Wilderness
Sheet 5 of 6

Salt Lake Meridian,
Salt Lake County, Utah.

U.S. Forest Service - Intermountain Region
 Uinta-Wasatch-Cache National Forest
 U.S. Congressional District 3

Map prepared for the office of Representative John Curtis.

Copies of this map are available for public inspection
in the Office of the Regional Forester,
Intermountain Region, Ogden, Utah.

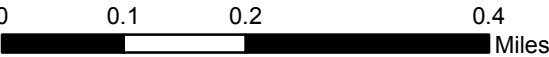


References

Data sources include FS Intermountain Region ALP data, FS FSTopo Data and data supplied by ESRI. Metadata available upon request.

Disclaimer

The USDA Forest Service makes no warranty, expressed or implied regarding the data displayed on this map, and reserves the right to correct, update, modify, or replace this information without notification.



Legend

- Wilderness Area Adjustments**
- Wilderness Deletions
 - Wilderness Additions
 - National Wilderness Areas
 - National Forest System Lands



Bonneville Shoreline Trail Advancement Act

Mt. Naomi Wilderness
Sheet 6 of 6

T. 13 N., R. 2 E., SLM, Cache County, Utah
Birch Canyon

U.S. Forest Service - Intermountain Region
Uinta-Wasatch-Cache National Forest
U.S. Congressional District 1

Map prepared for the office of Representative John Curtis.

Copies of this map are available for public inspection
in the Office of the Regional Forester,
Intermountain Region, Ogden, Utah.

Map Date - 9-JULY-2020